

Homestead Road  
Safe Routes To School



*Community Meeting #2*  
*February 25, 2019*





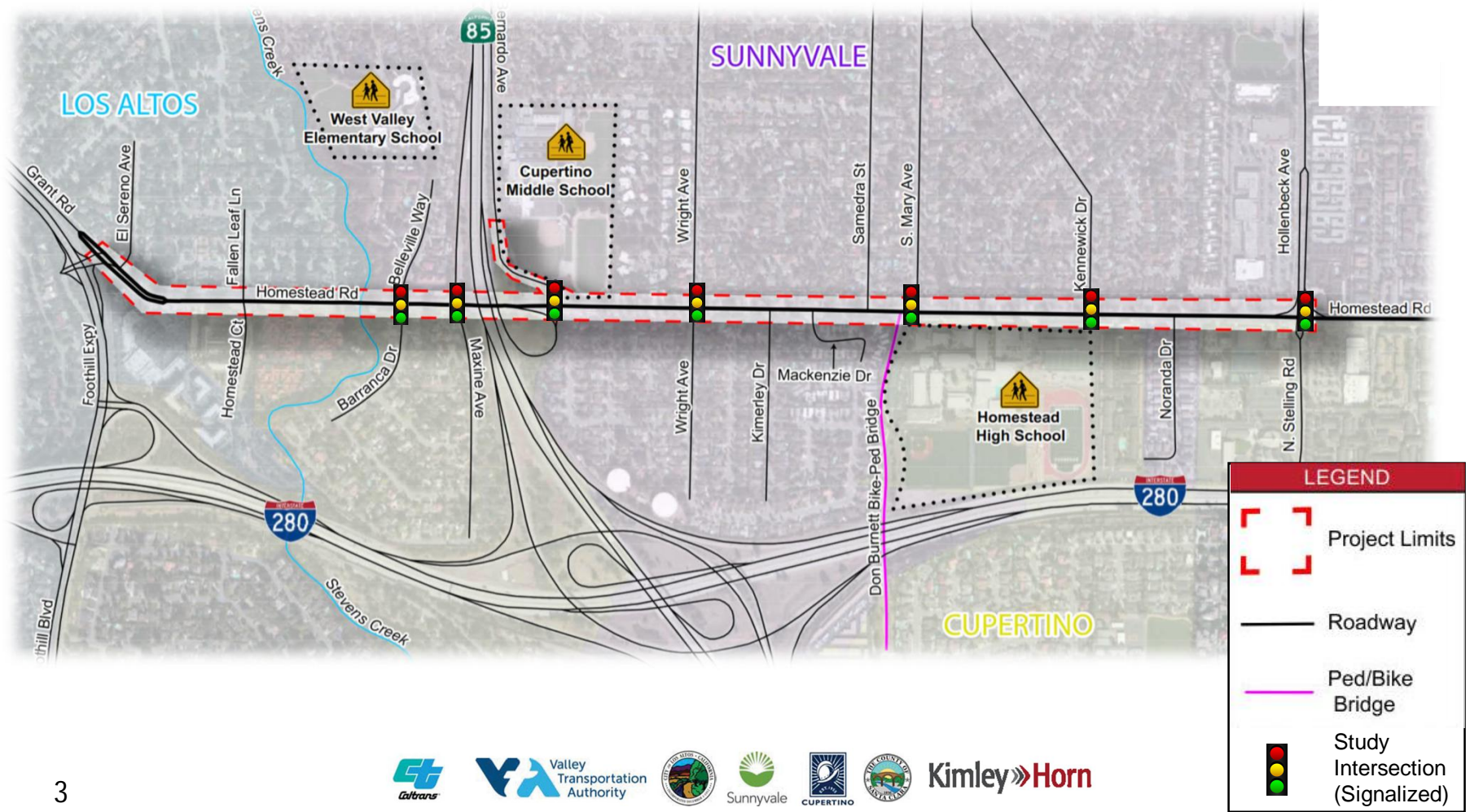
# Agenda

- I. Welcome and Introductions
- II. Study Status and Update
- III. Next Steps
- IV. Open House

# Homestead Road Safe Routes To School



## Project Study Area







## Project Background

- 1.5 mile corridor that connects 3 schools
- Heavily utilized bicycle/pedestrian corridor
- Lacks connected, low-stress bicycle/pedestrian network





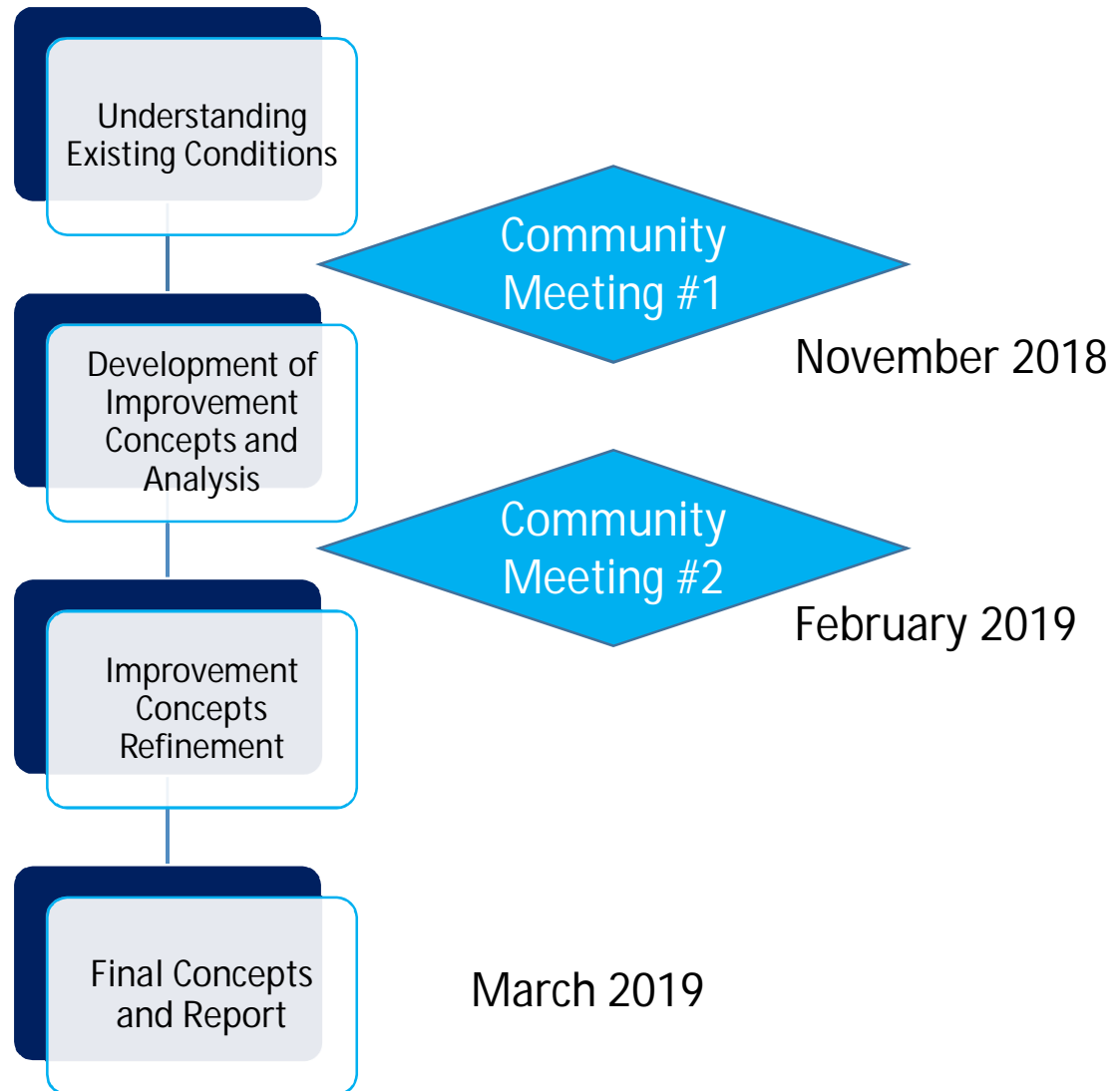
## Project Objectives

- Identify near-term bicycle/pedestrian infrastructure improvements
- Support safe and efficient bicycle, pedestrian, and transit facilities
- Connect students to West Valley Elementary School, Cupertino Middle School, and Homestead High School
- Seek funding through grant applications

# Homestead Road Safe Routes To School



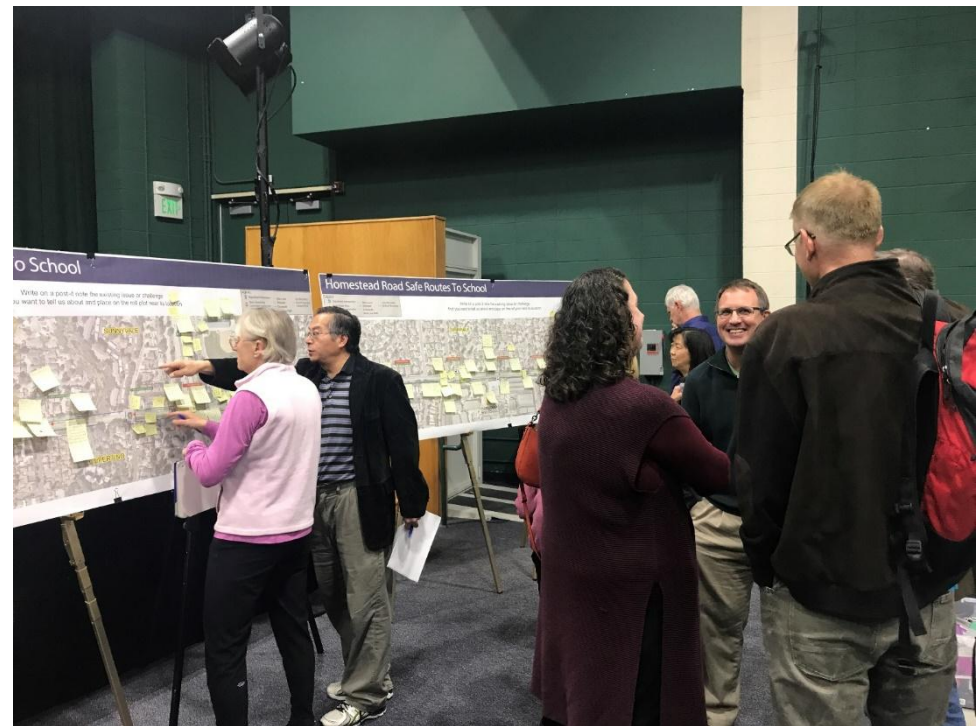
## Project Process





## Community Meeting #1 Summary

- November 26, 2018
- Over 60 community members in attendance
- Feedback received on mode of transportation used and key issues along the corridor

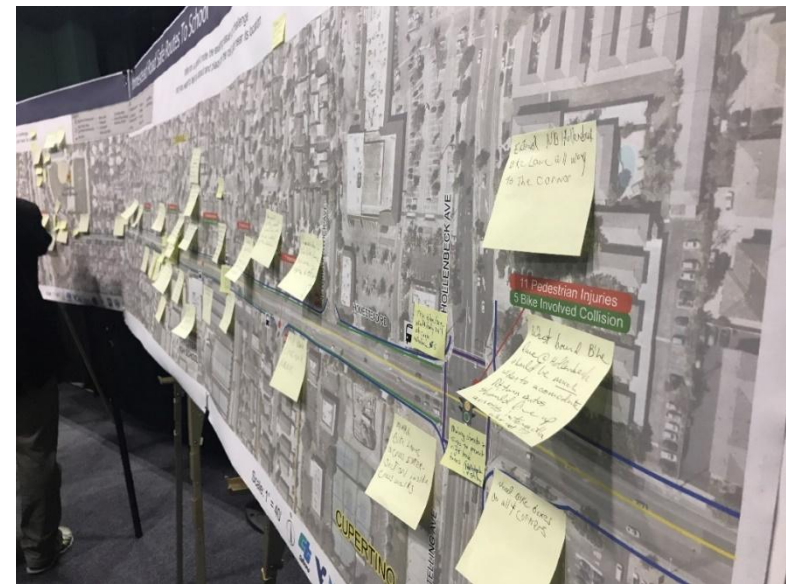






## Prior Community Comments

- Fallen Leaf Lane intersection difficult to navigate for autos, bicycles, and pedestrians
- Multi-use path ends at Stevens Creek
- Vehicular speeds
- Need better separation for bike lanes
- Congestion at SR-85 on-ramp and N. Stelling Road causes bicycle/pedestrian circulation issues







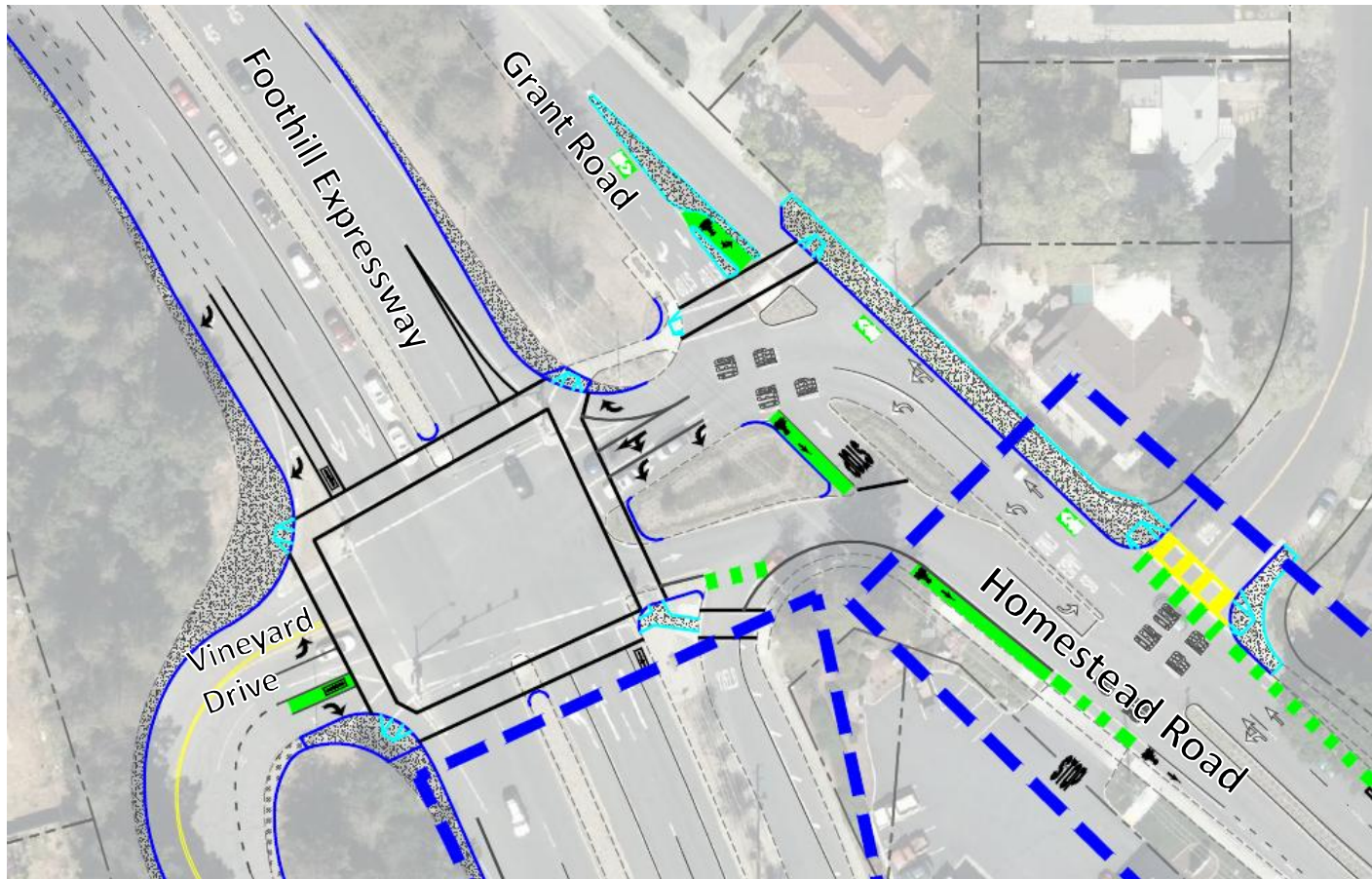
## Proposed Recommendations Corridor Wide Improvements

- Upgrade ramps to meet current ADA standards
- Install high visibility crosswalks
- Install bike crossing markings at intersections and conflict zones
- Tighten curb radii where feasible
- Narrow lanes and provide bike buffers where feasible

# Homestead Road Safe Routes To School



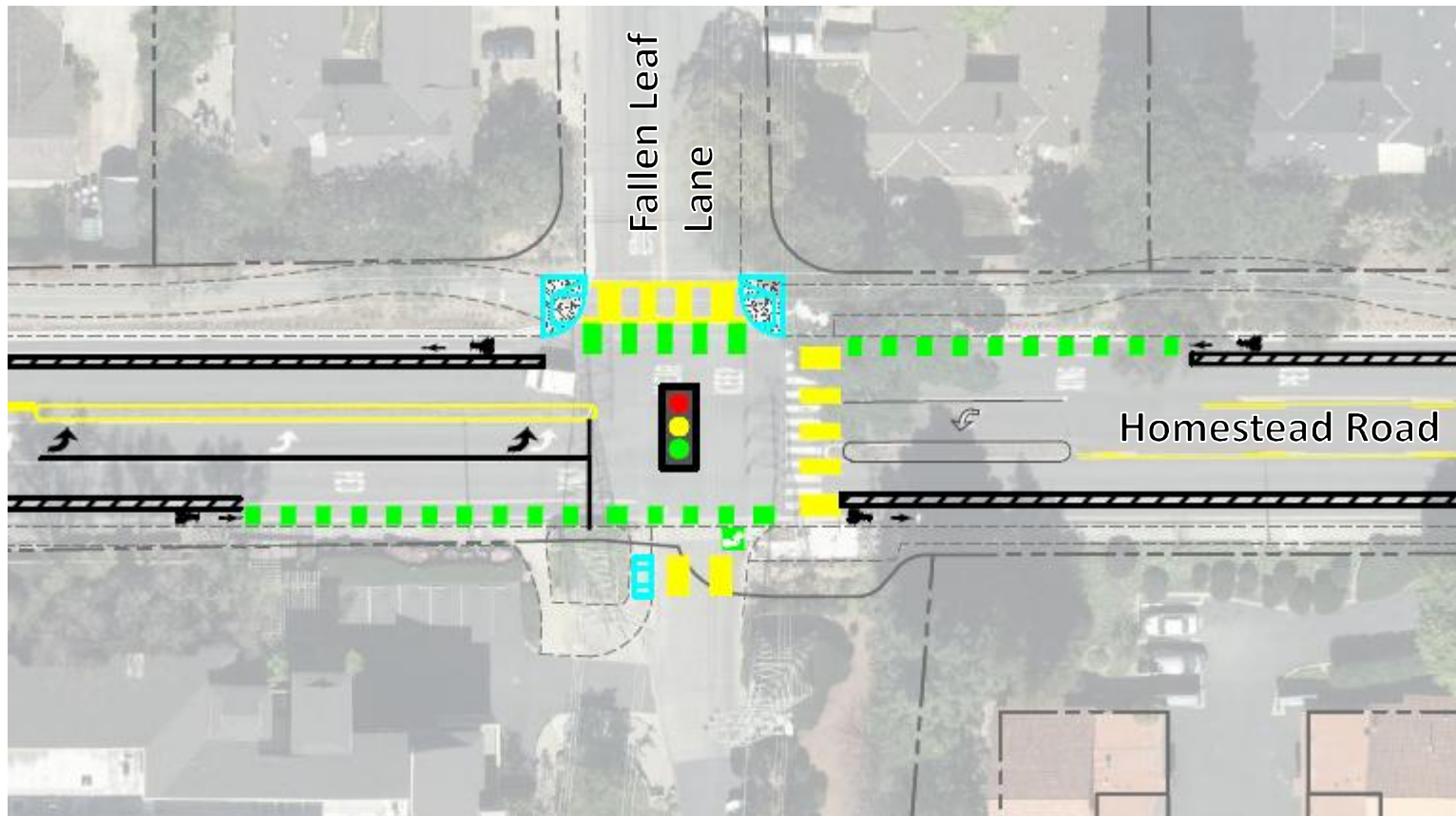
## Homestead Road at Foothill Expressway/Grant Road



# Homestead Road Safe Routes To School



## Homestead Road at Fallen Leaf Lane

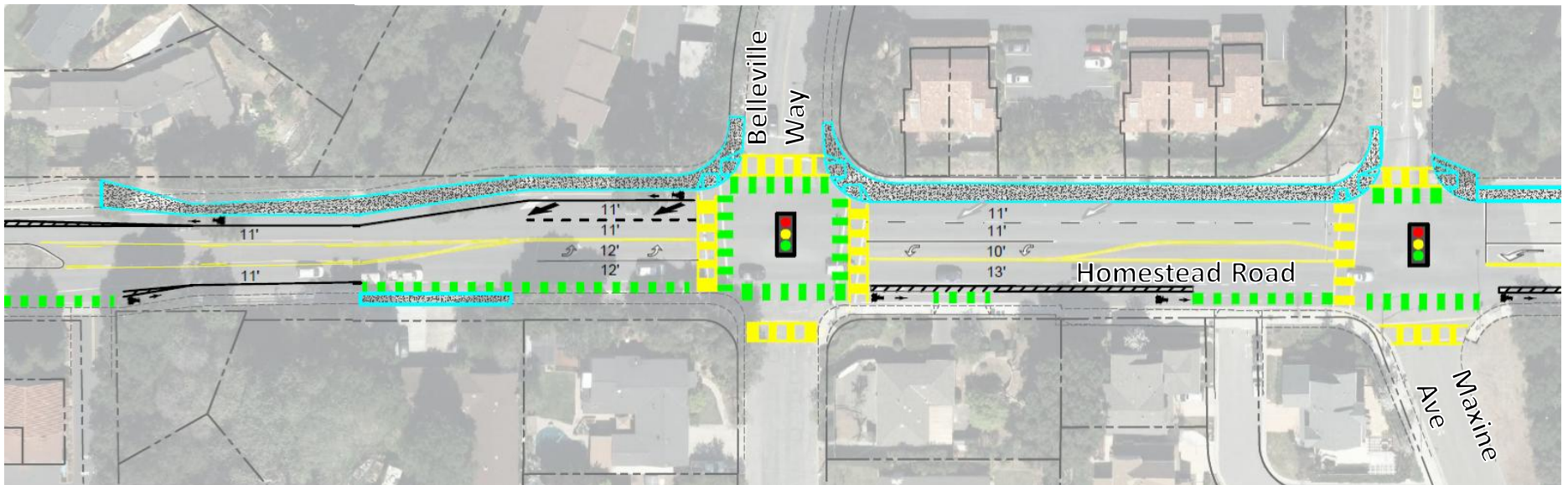




# Homestead Road Safe Routes To School



## Homestead Road at Belleville Way

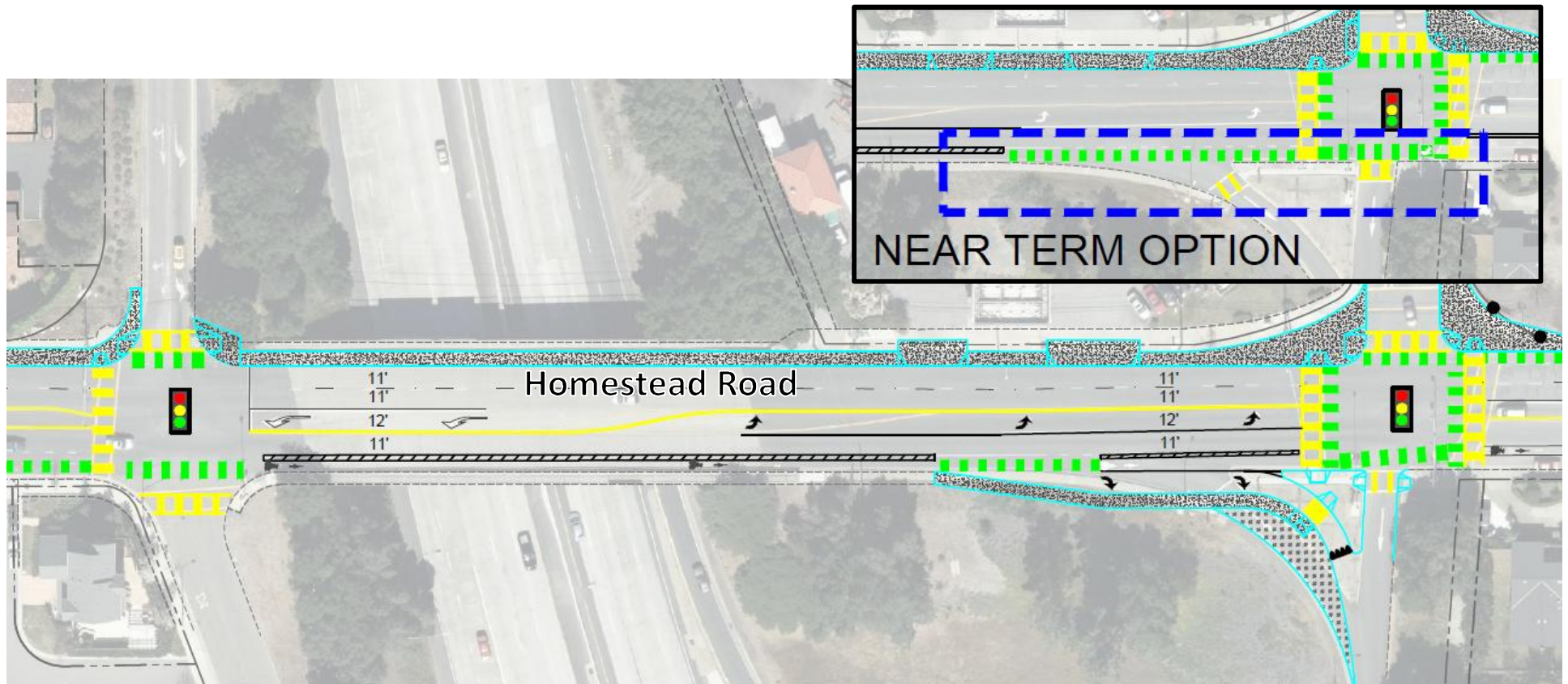




# Homestead Road Safe Routes To School

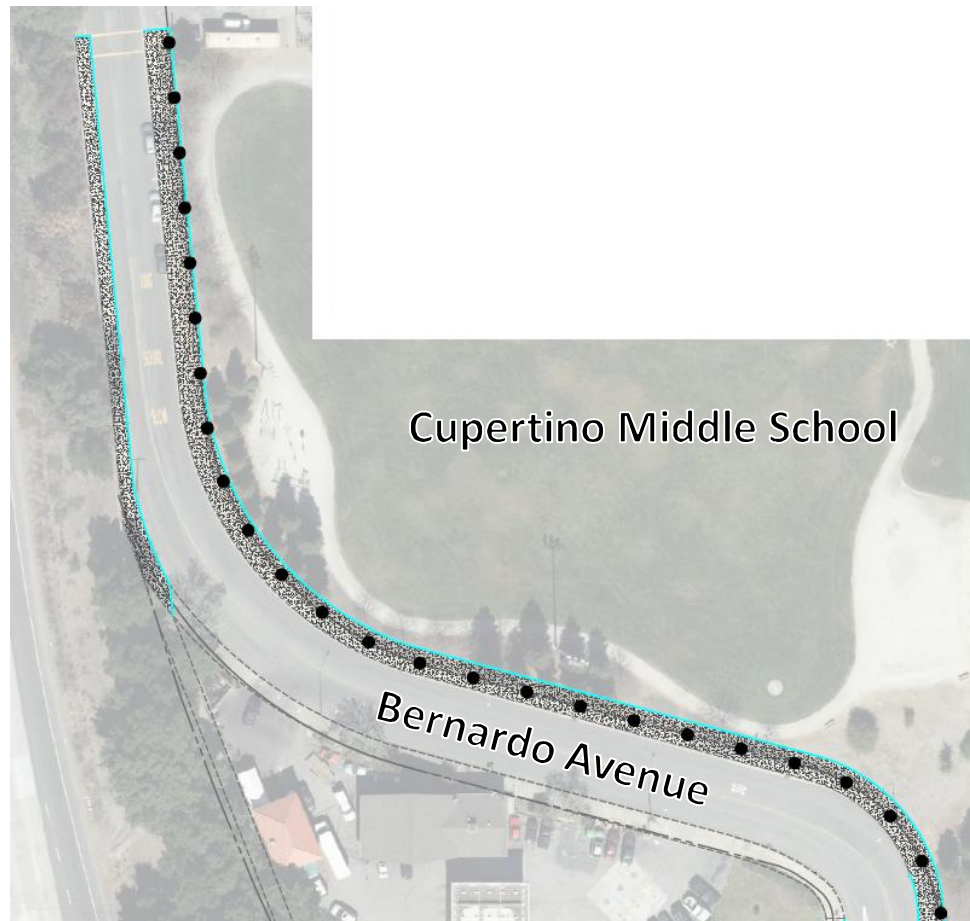


## Homestead Road across SR-85





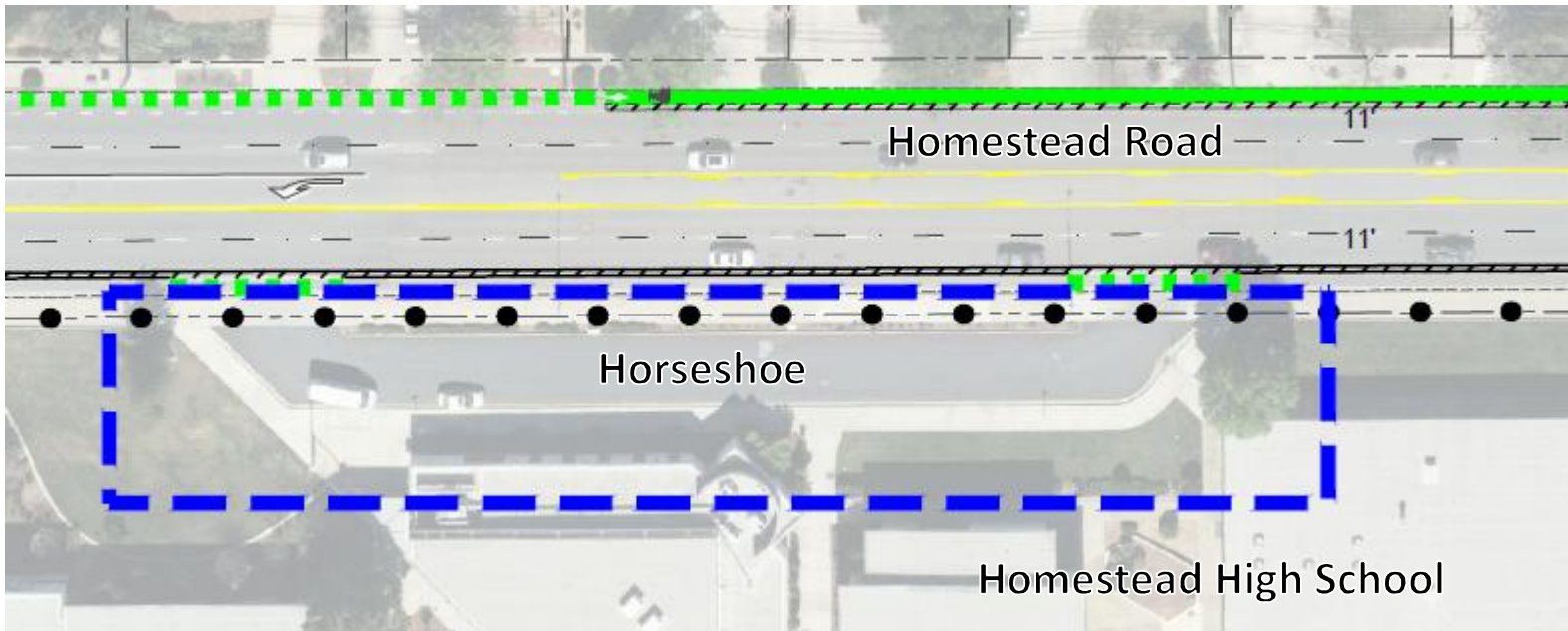
# Bernardo Avenue at CMS







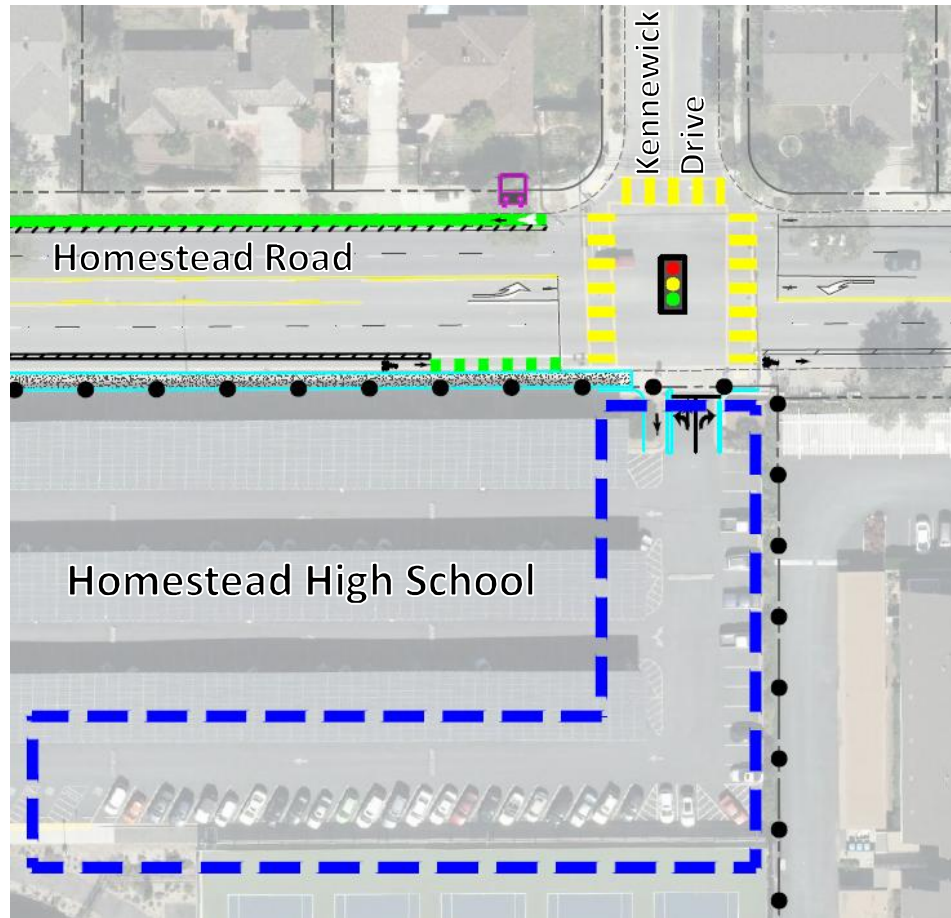
# Homestead Road at HHS



# Homestead Road Safe Routes To School



## Homestead Road at HHS

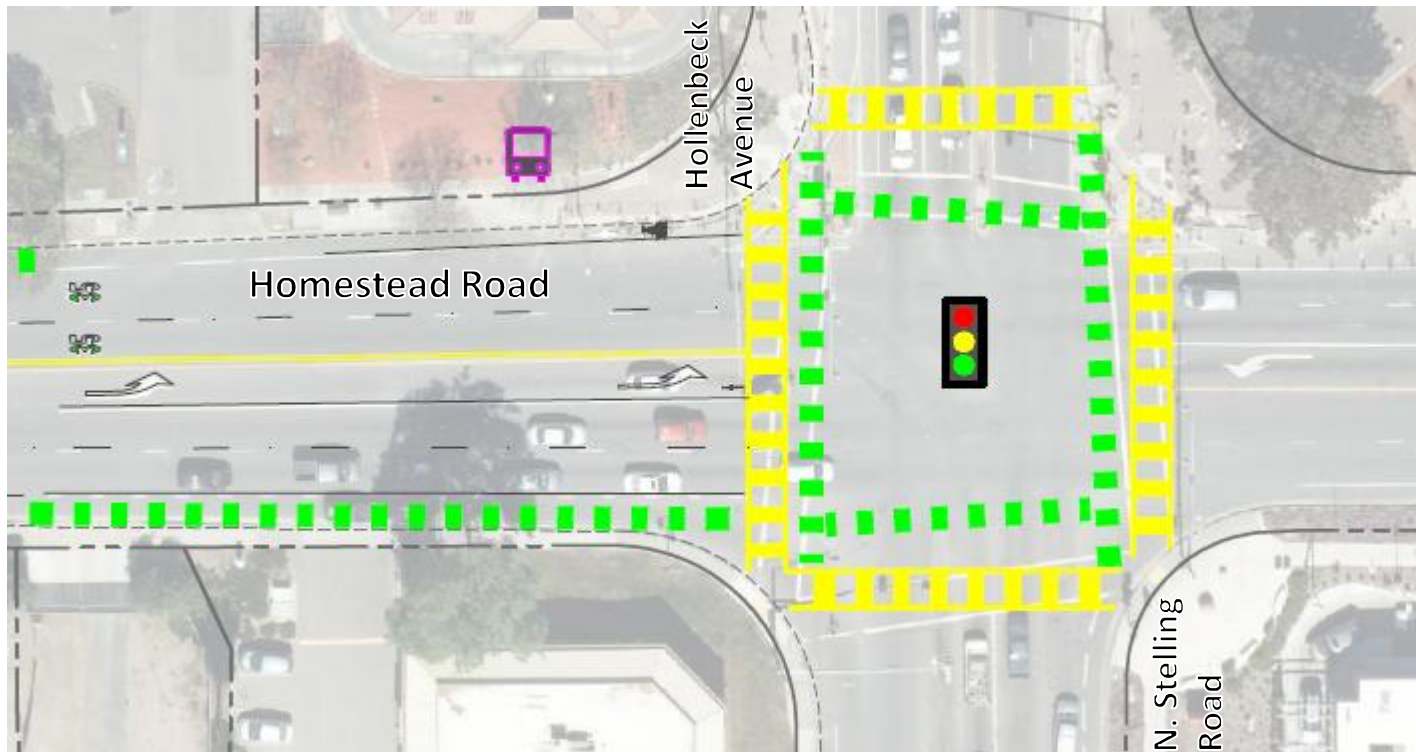




# Homestead Road Safe Routes To School



## Homestead Road at Hollenbeck Ave/N. Stelling Road





## Next Steps

- Refinement of Improvement Options
- Final report and concepts
- Identify funding opportunities and apply for grants



# Open House Objectives

- Do you have any concerns or feedback about the recommendations for improvements?
- Have we addressed the needs of the corridor?

If you like an improvement, please put a dot on the improvement box.

- Support
- Uncertain/Need More Info
- Do Not Support

Please write any concerns, comments, or improvement needs on the boards where allotted or add a sticky note.



## Other Opportunities to Provide Feedback

- Fill out a comment card here at the meeting
- Email any additional comments to:  
[RDA-HomesteadRoad.Study@rda.sccgov.org](mailto:RDA-HomesteadRoad.Study@rda.sccgov.org)
- Visit our project website:  
<https://www.sccgov.org/sites/rda/PnS/CP/Pages/Homestead-Rd.aspx>